

**Venting hob - Novy Easy 65**  
**Recirculation / Duct-out**  
**4-zones 65 cm**  
**Matte Line**



EAN 5414425265855

### Dimensions (mm)

Dimensions (WxDxH) (mm)	650 x 520 x 248
Cut-out worktop (WxD)(mm)	560 x 490
Dimensions cut-out with inset (WxDxH) (mm)	654 x 524 x 6

### Cooker hood

#### Energy label Extraction mode

Energy efficiency class (EEIhood)	A+++
Annual energy consumption (kWh/y) (AEChood)	18,2
Fluid Dynamic Efficiency class (FDEhood)	A
Lighting Efficiency class (LEhood)	-
Grease Filtering Efficiency class (GFEhood)	B

#### General information

Integrated motor	•
Number of metal grease filters	1
Duct out	•
Recirculation	• (default)
Dimensions exhaust (mm)	89 x 222
Position exhaust	Back left / Under left

#### Functions

Control	White slider touch control
Number of speeds	9 + P
Run-on timer extraction mode (min.)	30 (default)
Run-on timer recirculation mode (min.)	10
Cleaning indicator for grease filter	•
Replacement indicator for recirculation filter (recirculation mode)	•
Watertank(s) for cleaning	•

#### Air flow & noise level extraction mode

Air flow duct out (m <sup>3</sup> /u) (EN 61591):	
- Minimum	157
- Maximum continues	487
- Maximum	572
Air pressure (Pa):	
- Maximum	481
Sound pressure/power duct out setting (dB(A) re 1 pW)(EN 60704-2-13):	
- Minimum	29/41
- Maximum continues	56/68
- Maximum	60/73

## Air flow & noise level recirculation mode

---

Air flow recirculation (m <sup>3</sup> /u) (EN 61591):	
- Minimum	131
- Maximum continues	451
- Maximum	461
Sound pressure/power recirculation setting (dB(A) re 1 pW)(EN 60704-2-13):	
- Minimum	32/44
- Maximum continues	53/65
- Maximum	53/66

## Induction hob

### General characteristics

---

Black opaque glass	•
Bevelled glass edge	•
Surface and flushline mounting	• / •

### Cooking zones

---

Number of cooking zones	4
Front left: dimension (mm) / power (Boost) (W)	210 x 220 / 2100 (3000)
Rear left: dimension (mm) / power (Boost) (W)	210 x 220 / 2100 (3000)
Front right: dimension (mm) / power (Boost) (W)	Ø 175 / 1400 (2100)
Rear right: dimension (mm) / power (Boost) (W)	Ø 175 / 1400 (2100)

### Cooking functions

---

Control	White slider touch control
Power levels	9 + Power
Timer per zone	•
Minute minder	•
Stop&Go	•
Keep warm function	70°
Bridge function flexzones	• (1x)
Residual heat indication	•
Automatic cooking	•
Child lock function	•
Automatic pan recognition	•
Grill function	•

### Technical specifications

---

Electrical connection value (W)	7568 W
Multiphase supply voltage	230 V / 400 V - 1N / 2N
Single-phase supply voltage	230 V
Power cable (included)	2 m
Weight (kg)	15,9

# Accessories

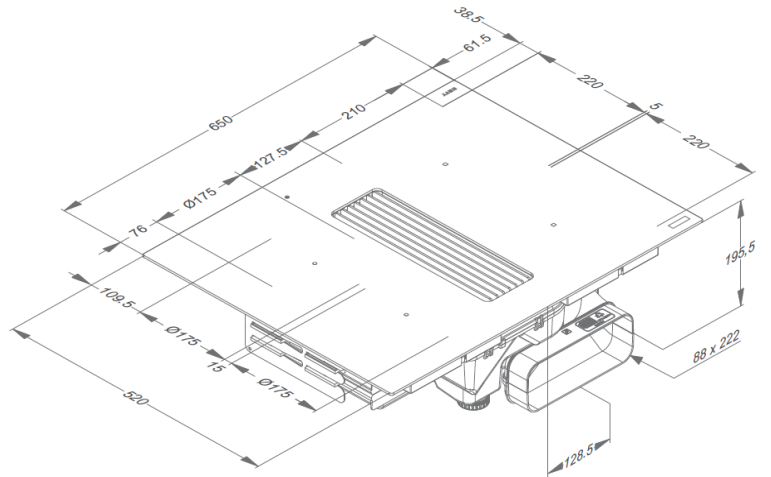
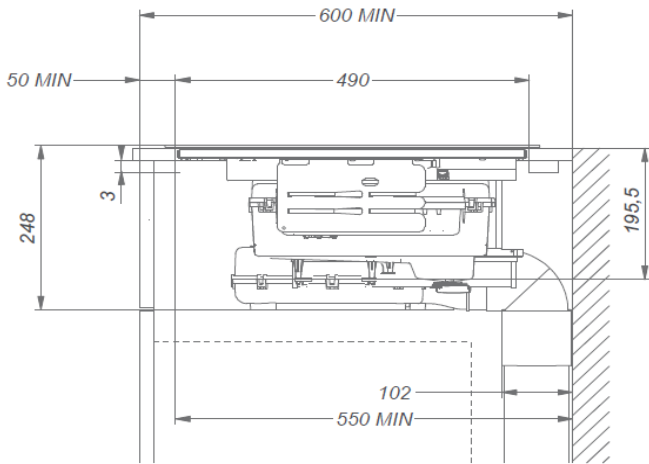
## Accessories

Vertical bend 90°

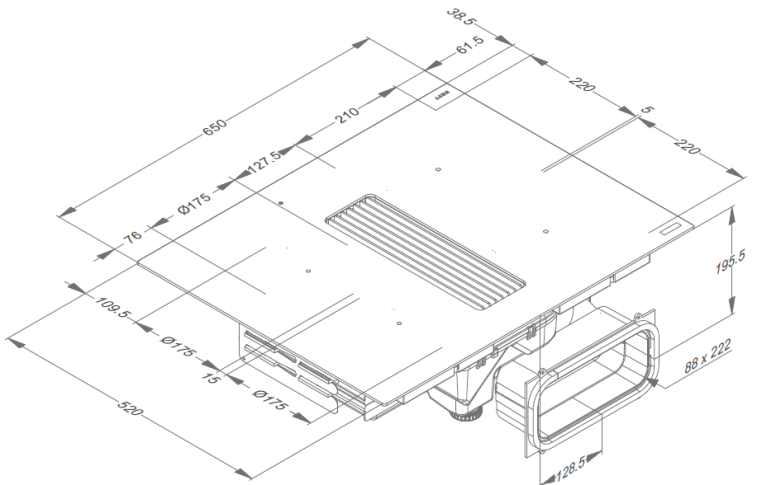
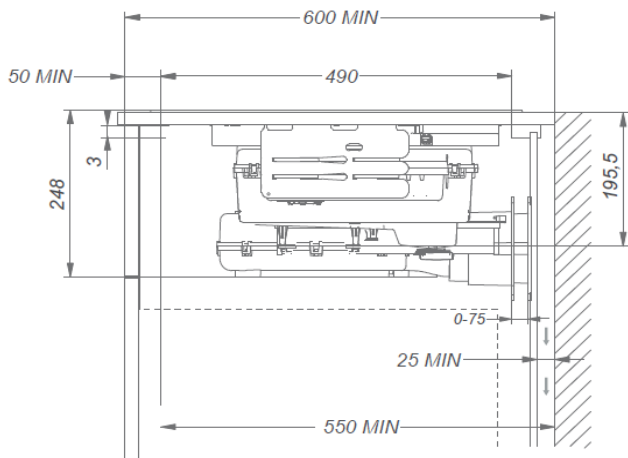
Supplied with the appliance

## Dimensions

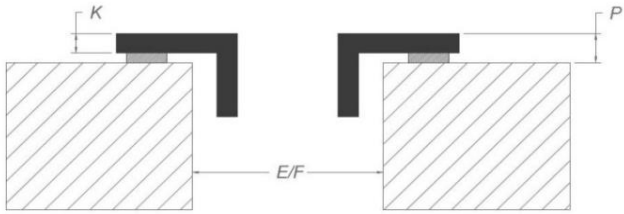
### Extraction



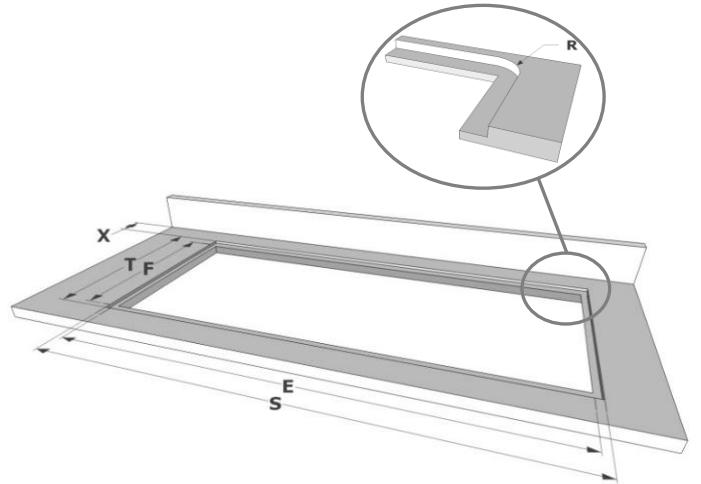
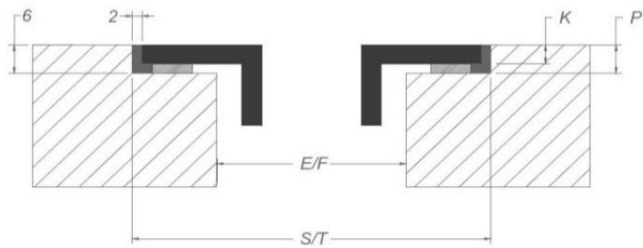
### Recirculation



## Surface mounting



## Flushline mounting



## Dimensions

mm

Surface  
Flush

	E	F	K	P	R	S	T	X
Surface	560	490	4	6				55 min
Flush	560	490	4	6	7	654	524	55 min

